

The McLintock

THREE STOREY TOWNHOUSE
FOUR BEDROOMS

PLOTS 61, 62, 65, 66, 67, 68, 69, 70, 113, 114



Ground Floor

Lounge/dining
4.88m x 4.45m
16ft x 14.6ft

Kitchen
3.56m x 2.63m
11.7ft x 8.6ft

First Floor

Bedroom one
4.45m x 2.63m
14.6ft x 8.6ft

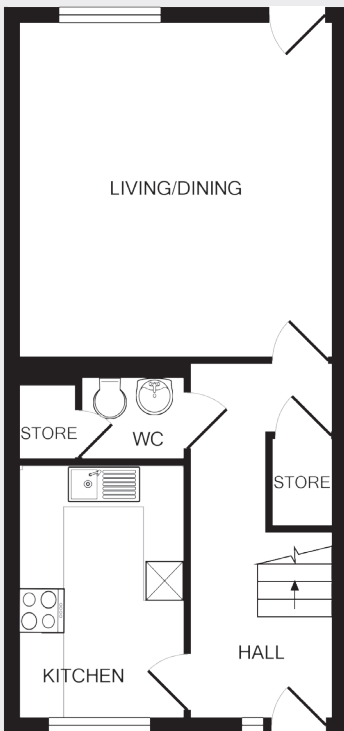
Bedroom two
3.0m x 2.63m
9.8ft x 8.6ft

Bedroom three
3.1m x 2.1m
10.1ft x 6.9ft

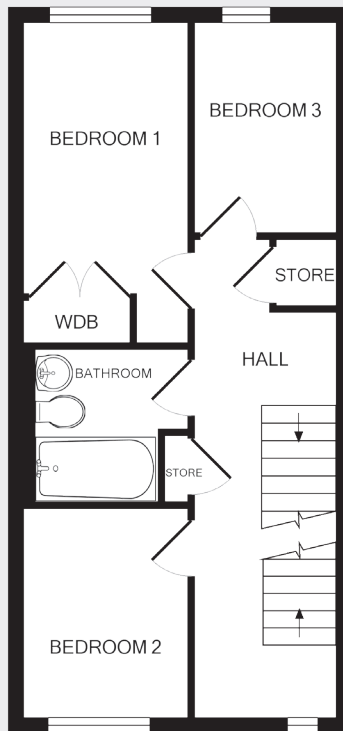
Second Floor

Master suite
4.2m x 3.75m
13.8ft x 12.3ft

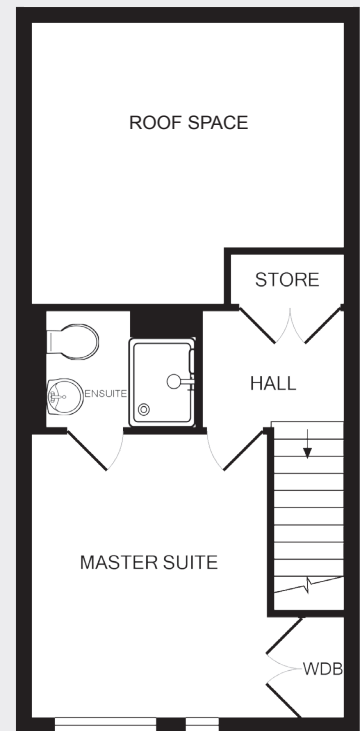
122.4 SQ M / 1318ft²



GROUND FLOOR



FIRST FLOOR



SECOND FLOOR