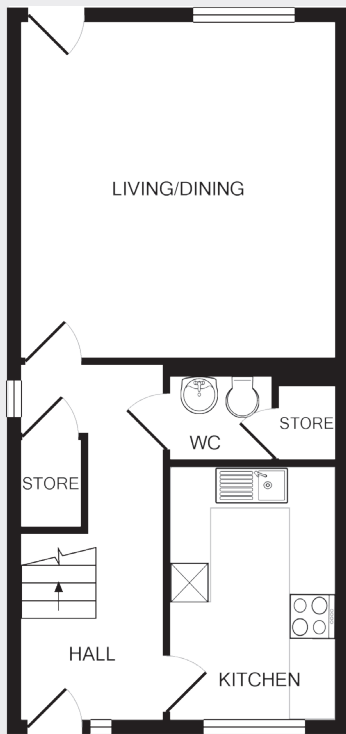


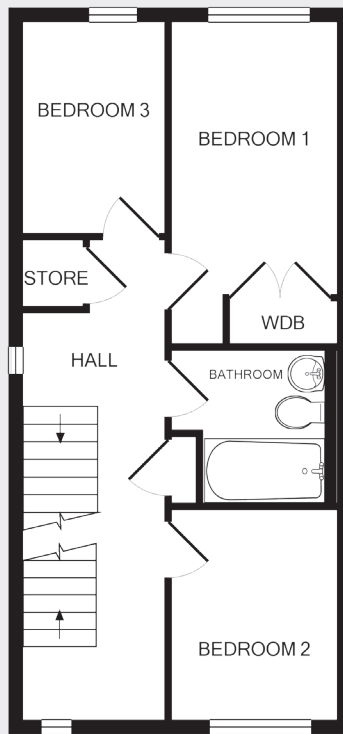
The Robertson

THREE STOREY TOWNHOUSE | FOUR BEDROOMS

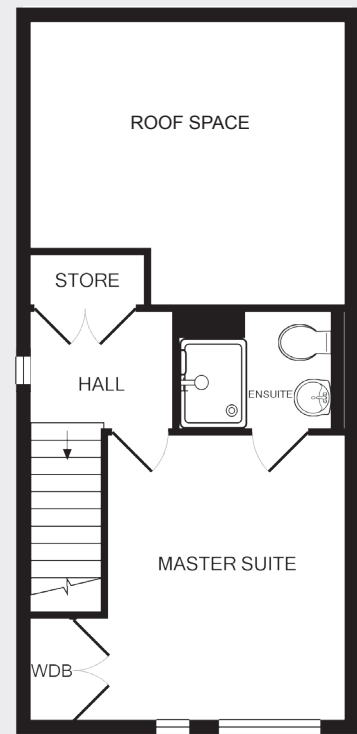
PLOTS 60, 64, 71, 72, 79, 115, 116, 121



GROUND FLOOR



FIRST FLOOR



SECOND FLOOR

Ground Floor
Lounge/dining
4.92m x 4.45m
16.1ft x 14.6ft
Kitchen
3.56m x 2.68m
11.7ft x 8.8ft

First Floor
Bedroom one
4.45m x 2.68m
14.6ft x 8.8ft
Bedroom two
3.0m x 2.68m
9.8ft x 8.8ft
Bedroom three
3/1m x 2.1m
10.1ft x 6.9ft

Second Floor
Master suite
4.2m x 3.75m
13.8ft x 12.3ft

123.6 SQ M / 1330ft²